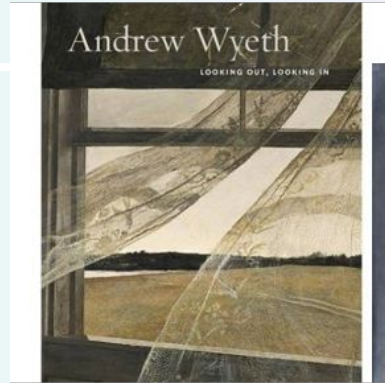


LOOKING IN - LOOKING OUT

ART REFLECTS THE
TIME AND PLACE IT
WAS CREATED.
NOW - SPRING 2020 in
WASHINGTON, DC -
IT'S YOUR TIME
TO CREATE AND SHOW
HOW YOU FEEL...



Your art will document World History
WINDOWS
INSIDE AND OUTSIDE

Inspired by Andrew Wyeth and Spring 2020

presentation begins



LOOKING in LOOKING out

1) **Research** world architecture to find a building you like.

Write down details such as:

- ❖ Name of building (i.e. White House)
- ❖ Location (city, state, country, continent)
- ❖ Year it was built or created
- ❖ Name of architect who designed it
- ❖ Style, if any (i.e. Gothic)

In some of the ancient world architecture, there may be NO windows, but you can add them.

2) **Draw** a simplified version of the building.

See the last slide for an example.

LOOKING in LOOKING out



STEP 3

3) Select one painting to study. (2 included in this lesson)

Use [Visual Thinking Strategies](#) (VTS) to create a dialogue between student and adult.

NOTE: This step will particularly help students identify their feelings about social distance.

Take a few silent moments to look at the painting...

- Q1. What's going on in this painting?
- Q2. What do you see that makes you say that?
- Q3. What more can we find?

NOTE :The student does most of the talking, and the adult rephrases what was said.

LOOKING in LOOKING out



STEP 4

4) **Fill the windows with people** such as your family, relatives, pets, friends, and whoever you like.

Imagine how the faces look when they are NOT free to out as usual. Those are the faces you would put in your windows.



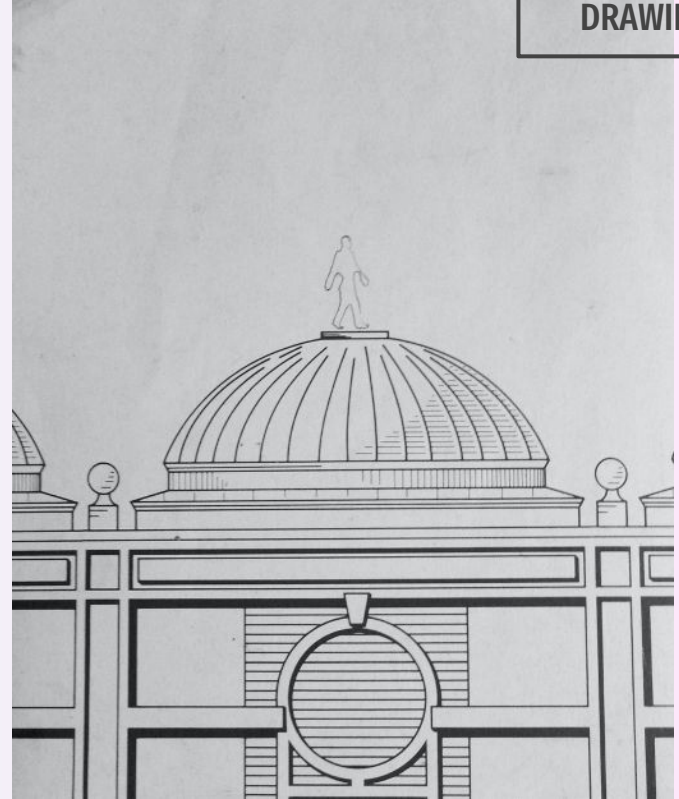




**PHOTOGRAPH
OF THE BUILDING**

African American Museum,
Washington, DC

DRAWING SAMPLE



**SIMPLIFIED
DRAWING**