



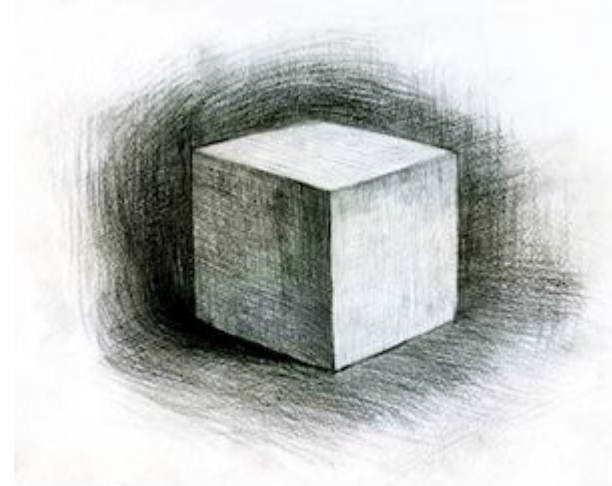
STILL LIFE DRAWING

Part 1 - Value & Value Scale

Part 2 - How To Draw A Value Scale

Part 3 - Drawing With Value

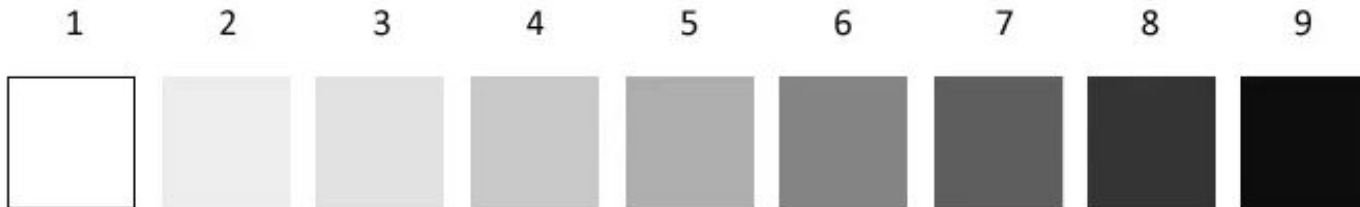
Tools: Paper, pencil, eraser, ruler





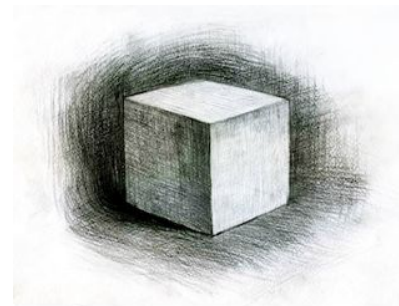
Value means how light or dark something is. Value is used in drawing to show light and shadow. Without light and shadow we could not see anything. We could still draw, but we could not see it. Right? Now you can see the importance of understanding value in drawing. Value adds realism.

PART 1



The Value Scale

“The value scale is a system of organizing values. It consists of nine values ranging from white to black, with several shades of gray in between. These shades of gray help to create the illusion of depth and three-dimensionality.”



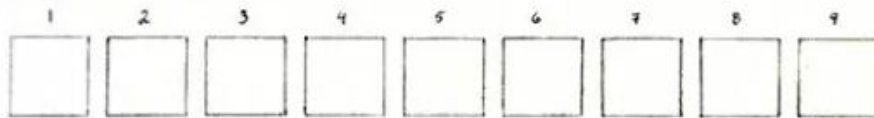


PART 2

Draw a Value Scale



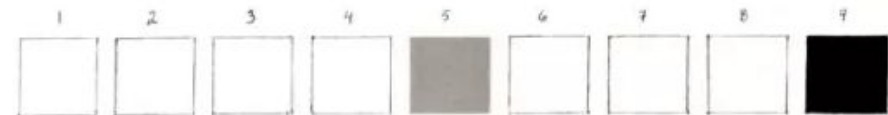
1. Use a ruler and draw nine equally spaced squares.



2. Color the last square the darkest.

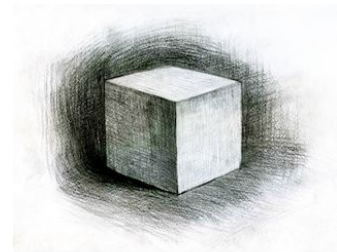


3. In square 6 draw the middle value.



4. Next fill in square 2 or 8.

5. Continue filling in the values from the ends to the middle. 3 & 7, 4 & 6.





Drawing With Value

PART 3

- 1 . Gather some 3-dimensional objects...like a cup, ball, toy car, banana, etc.
2. Arrange your 3-dimensional items on the table.
3. Look carefully. Narrow your eyes to see better the lights and darks on the objects. Where is the darkest area? Where is the lightest area?
4. CREATE A 5 SHADE VALUE SCALE - Use a separate piece of paper and sketch lightly with a pencil to create a value scale like in the picture below.



5. Draw your still life with these values in mind.

NOTE - Your completed drawing should have the 5 shades that you created in your value scale.

